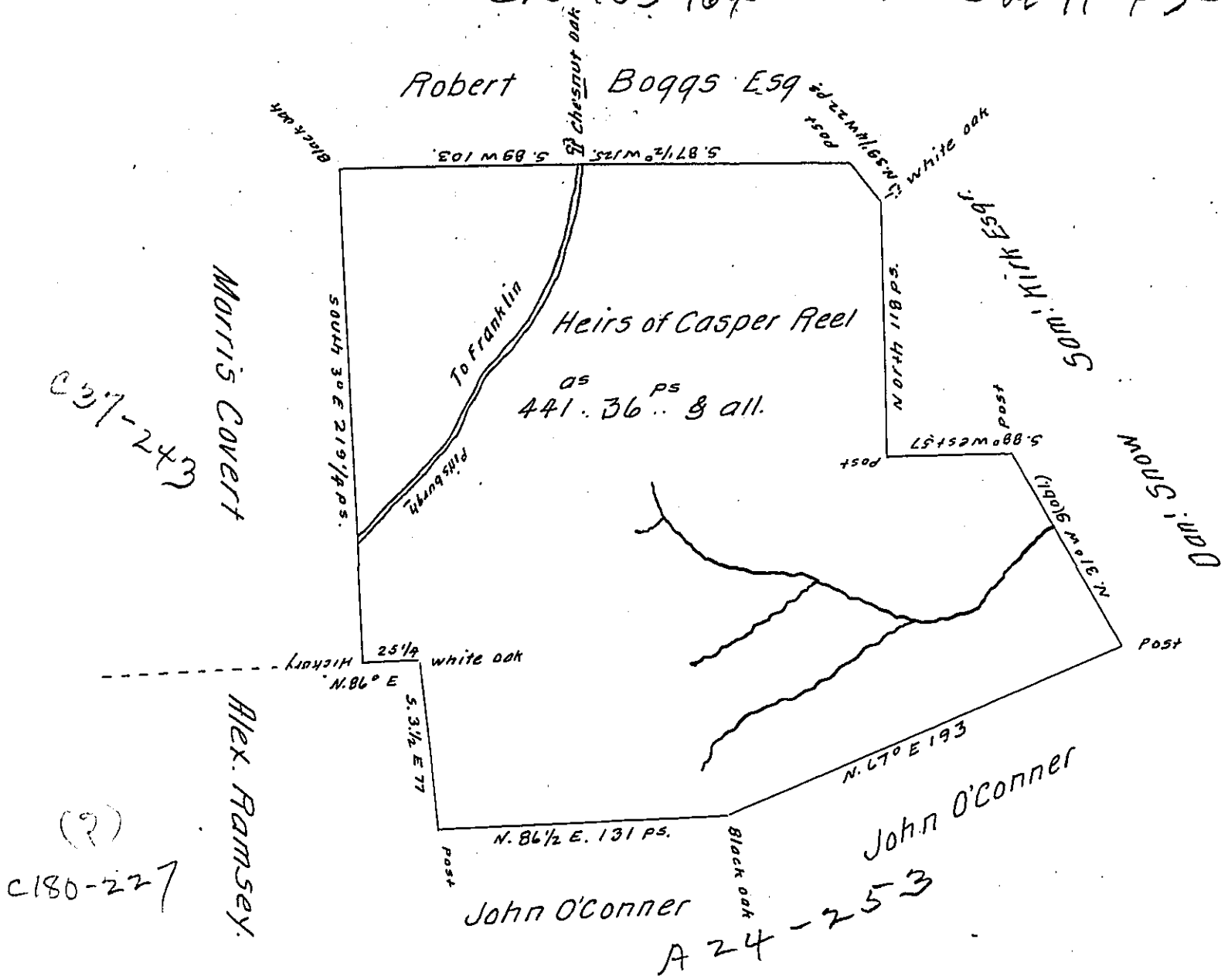


C13-163-164

Sub H 43-49



The above is a draft of a tract of land situate in Cranberry Township Butler County containing four hundred forty one acres thirty six perches with the usual allowance of six per cent. Surveyed on the twelfth day of January A. D. 1836. for the legal Heirs & Representatives of Casper Reel dec'd by Virtue of his Actual Settlement and improvement.

Jacob Spangler Esq. }
 Surveyer General

James J. Hoge D.S.

IN TESTIMONY that the above is a copy of the original remaining on file in the Department of Internal Affairs of Pennsylvania, made conformably to an Act of Assembly approved the 16th day of February, 1833, I have hereunto set my Hand and caused the Seal of said Department to be affixed at Harrisburg, this twenty second day of August 1907.

Henry Howett
 Secretary of Internal Affairs.